



Saflec Access Control Integration

Contents¹

1	Introduction	2
a.	License Requirements.....	2
a.	Integration Components.....	2
b.	CatVision specific SAFLEC setup	3
2	Device Addition and Configuration	8
a.	Introduction.....	8
b.	Devices Section (Add a new device)	8
c.	Configuration Section (Tabs)	9
3	Database.....	12
a.	Navigate to the Database	12
b.	Database Interface	12
4	Events.....	14
a.	Introduction.....	14
b.	Triggers	14
c.	Actions	16

¹ While Cathexis has made every effort to ensure the accuracy of this document, there is no guarantee of accuracy, neither explicit, nor implied. Specifications are subject to change without notice.

1 Introduction

This document will serve to explain the integration of the SAFLEC device with CatVision. Its focus will be to explain how the device is integrated with the CatVision GUI, and Events Setup.

Note:

1. If you need information regarding the regular operation of an SAFLEC device, please consult the relevant SAFLEC documentation.
2. There is a General Integration section in the main CatVision manual. It has vital information about creating an integration database, as well as a general introduction to the Integration Panel. **Read over this section.**

a. License Requirements

Access control "device" license (CACC – 2000)

This license is the "base" license to integrate with an access control system. It is applied to the server to which the access control device is connected.

Access Control "door" License (CACC – 1001 and 1008)

These licenses apply to the doors or nodes in an access control system. The CACC-1001 is for each door, and the CACC – 1008 is a discounted license for 8 doors.

Access Control "bundle" License (CACC – 3000)

This license includes the device license (CACC-2000) and enables an unlimited number of doors to be added to the system.

a. Integration Components

All CatVision integrations have two component levels: **Device** and **Object**.

Device The device is CatVision software's interface, which handles all the interaction between CatVision and the integrated hardware. When you add an integration, to the CatVision system, you add a device. The messages received from the device are called Device Events.

Objects Objects are the individual pieces of hardware that comprise the integration. You may have multiple "object types" under the objects group. For example, the main controller and door nodes, of an access control system, are both objects. They are different types of object.

Messages and Object Types

The following device event messages, and objects/object types, will be represented in the CatVision integration of the Saflec hardware. They will be visible in the Site → Setup Tab → Configure Servers → Integration devices.

1. Device Events

- a. Door event**
- b. Informational**
- c. Input event**
- d. Output event**
- e. Problem**

f. **Reader event**

2. **Object property**

The Saflec access control system has four Objects

- a. **Door** (has these states: open, open [latched], closed locked, closed unlocked, unknown)
- b. **Input** (has these states: inactive, active, unknown)
- c. **Output** (has these states - active, active [latched], inactive, unknown)
- d. **Reader** (associated with a door)

b. CatVision specific SAFLEC setup

There are some SAFLEC specific setups necessary to get the integration working:

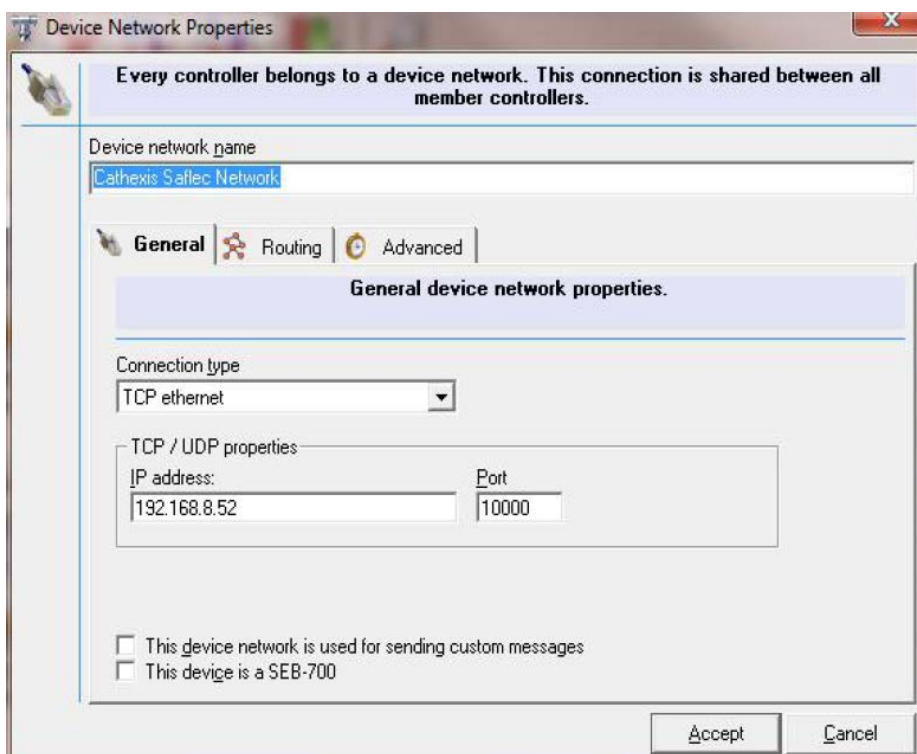
Installation of SAFLEC software kit, called SACS, and database

The database should have been installed along with the SACS kit. After this, configure your SAFLEC devices to your requirements, and verify that your Saflec installation is working as you expect it to.

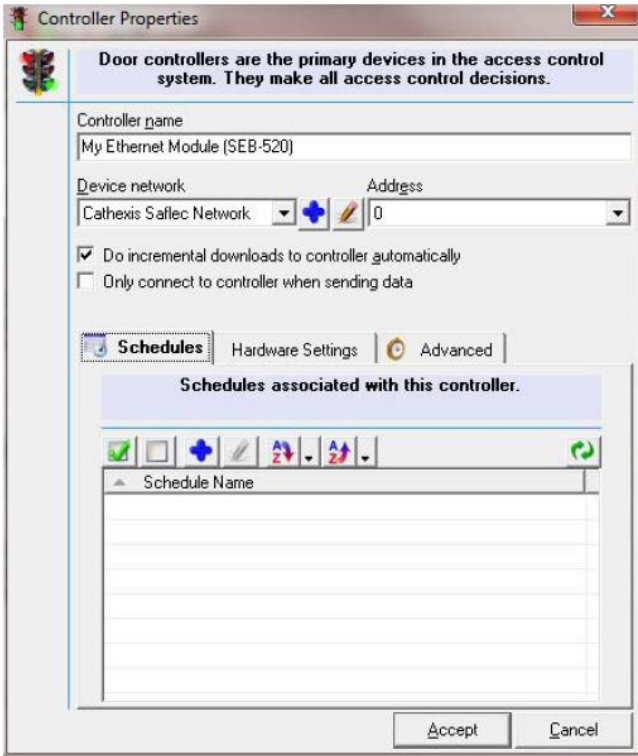
Configuration of SAFLEC devices on SACS

Below is an example of a working setup, with editions to Device Network, Controller, Readers, Doors, and Inputs & Outputs (which are all represented in the CatVision software):

- **Device Network**



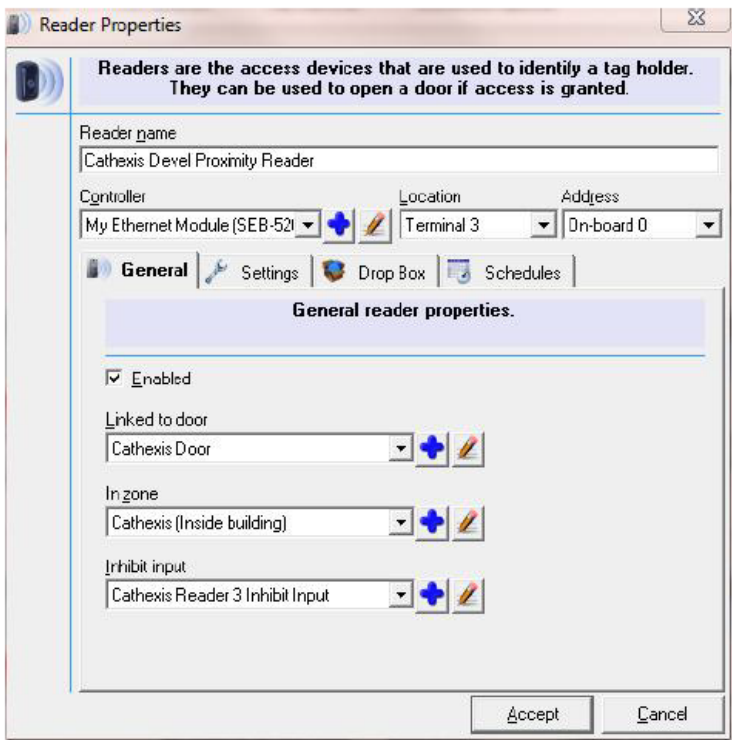
- **Controller**



- **Reader Properties**

On the reader, make sure that you check the box, under Reader Properties, titled “Display messages on this reader”.

General



Settings

Reader Properties

Readers are the access devices that are used to identify a tag holder. They can be used to open a door if access is granted.

Reader name
Cathexis Devel Proximity Reader

Controller: My Ethernet Module (SEB-52) Location: Terminal 3 Address: On-board 0

General **Settings** Drop Box Schedules

Settings for this reader.

- Ignore door state (tailgating)
- Ignore tag holder schedules
- Ignore tag holder valid range
- Reader used for take-on
- Reader used for time accumulation
Time accumulation direction: <Ignore direction>
- Display messages on this reader
- This reader supports double verification

Accept Cancel

- **Doors**

Inputs and outputs

Door Properties

Doors are points of access control. They are used to restrict movement within the access controlled system.

Door name: Cathexis Door

Controller: My Ethernet Module (SEB-520) | Door type: Normal door

Inputs & Outputs | Zones & Readers | Advanced

Outputs control the state of the door

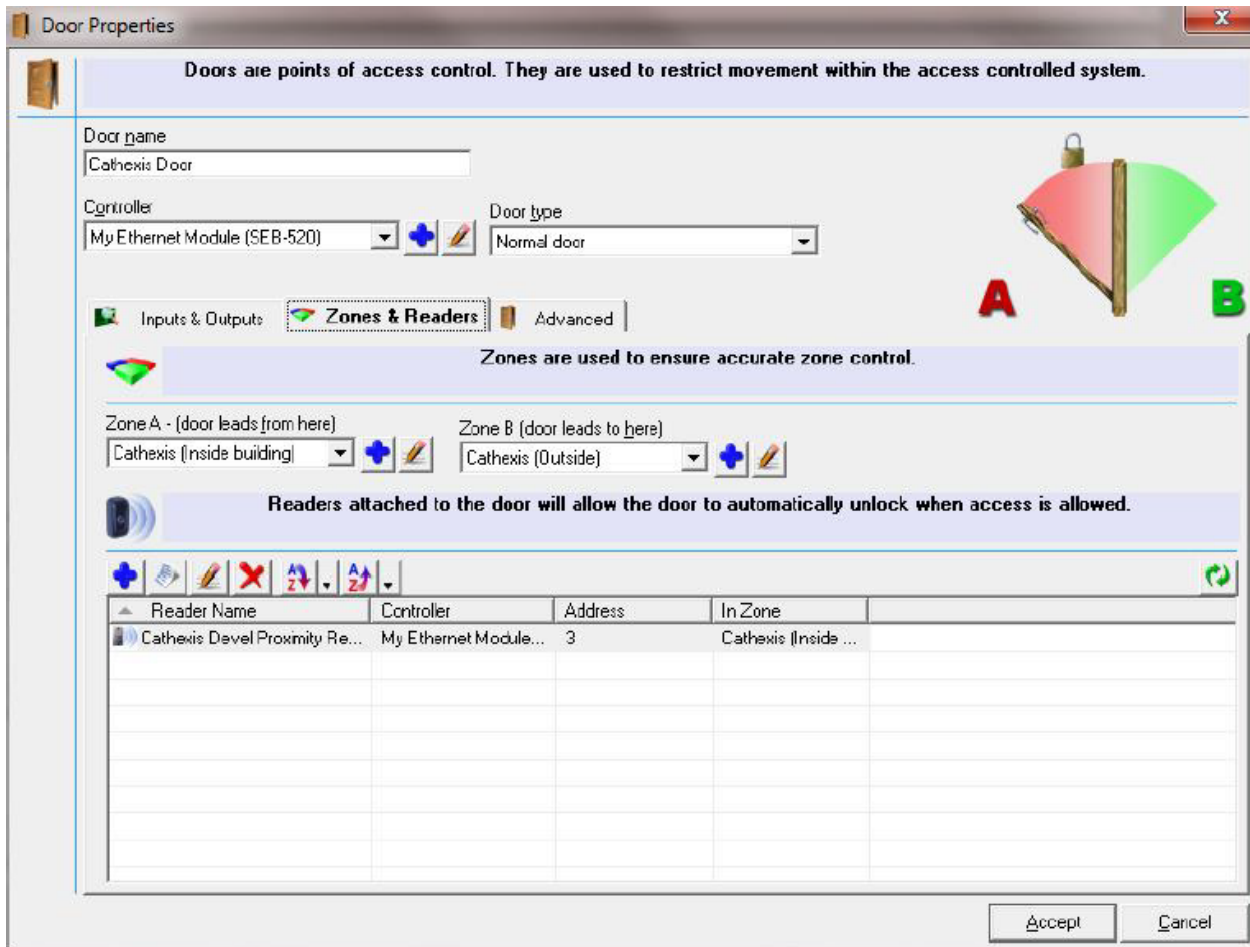
Component	Linked Output	Address	Description
Lock	Cathexis Door Lock A	1	Output that controls the electronic lock
Buzzer	<No output selected>		Warning buzzer used when the door is in an incorrect state

Inputs provide feedback from the door regarding its state.

Component	Linked Input	Address	Description
Closed sensor	<No input selected>		Sensor that monitors that the door is closed
Inhibit input	<No input selected>		The door will NOT be opened when this input is active
Photocell	<No input selected>		Beam across door that counts people entering/exiting
Pushbutton 1	<No input selected>		Button that will unlock the door
Pushbutton 2	<No input selected>		Button that will unlock the door

Accept | Cancel

Zones and readers



Installation of Cathexis SAFLEC databasing interface service (on Windows)

This is the interface (middle-man) between the Saflec software, and CatVision. **This must be installed on the server running the Saflec SACS software.**



The Cathexis SAFLEC databasing interface service is a file that you may obtain from Cathexis. This service will be the interface between CatVision and the Saflec software.

CathexisSaflecInstaller

Run this file, and click through the prompts. After installation, restart the computer.

- **Make Sure the Service is Running**

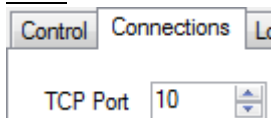
Navigate to the Cathexis Saflec Service installation folder (e.g. "C:\Program Files (x86)\Cathexis Saflec Service") and run the database service control application (CatSaflecServiceConfigureForm.exe):



The service is running...

Under the *Control* tab you will see whether or not the service is running. The Play/Stop button will run/stop the service

Note:

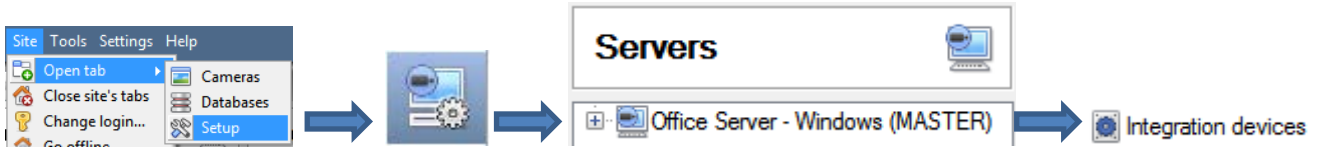


Under the *Connections* tab you may set the TCP port for this service. Make sure the port number, which you set here, is reflected in the CatVision, when you add the Saflec device.

2 Device Addition and Configuration

a. Introduction

Integrations are added on a server-by-server basis. They are managed in the Integration Devices panel, under the Setup Tab, of the servers to which they are added. To get to this Integration Panel follow this path:



You will notice two sections in the Integration Panel:

1. The **devices** list, which will list the integration devices attached to your integration database.
2. The **Configuration** section which enables you to edit/review, the device which you have selected in the **devices** section.

Name	Driver
cctv	Design International CCTV
IXP20.4	Impro IXP20 access control
IXP20.5	Impro IXP20 access control
IXP220	Impro IXP220 access control

Configuration of 'IXP220'

Object configuration | Object properties | Device events | Groups | General


Object type: All objects

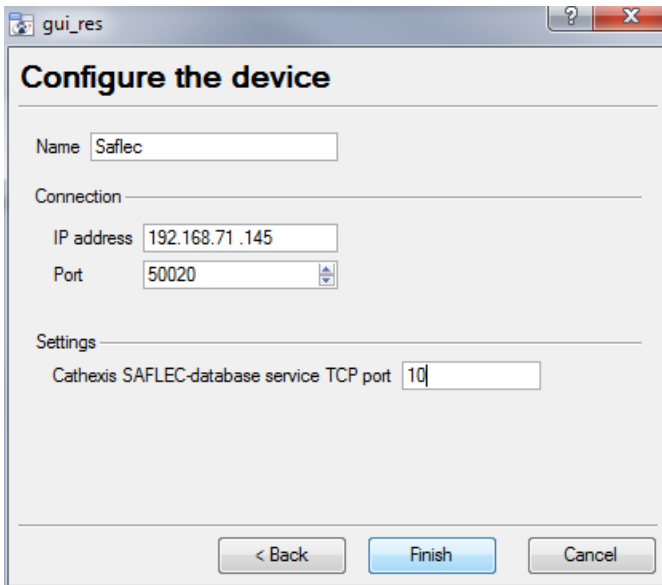
Type	ID	Name	Cameras	Groups	License
Communication channel	udp_channel	udp_channel			

New | Edit | Delete | 1 item

Connected to device server

b. Devices Section (Add a new device)

1. Once in the Integration Panel, in the devices section, click on . This will open the addition window.
2. Select **Saflec** from the list.



Give your device a descriptive **name**.

The **Connection** information must be that of the Windows unit, that is running the Saflec SACS, and Cathexis Saflec Service, software. These were installed in the previous section of this document.

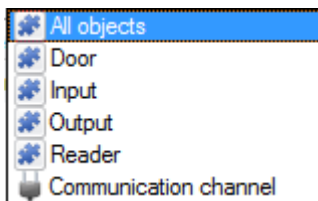
Under *Settings*, make sure that this TCP port, is:

1. The same as the TCP port, which was set [here](#).
2. Not in user by another process.
3. Not blocked by a firewall.

c. Configuration Section (Tabs)

The configuration section is divided up into a number of Tabs. The available tabs are: **Object configuration, Object properties, Device events, Groups, General**.

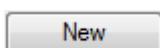
Object Configuration



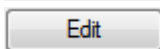
The object configuration tab is the tab where you may view all the individual objects that comprise the integration.

The **Saflec** integration has the following objects: **Door, Input, Output, and Reader**.

• *Object Configuration Buttons*



You may add a new object by clicking on New.

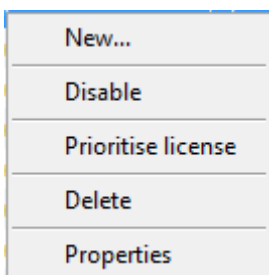


Will open up an existing object for edition.



Is used to delete an existing object from the CatVision configuration.

• *Object Configuration Right-click Options*



New will open up the dialogue to add a new object.

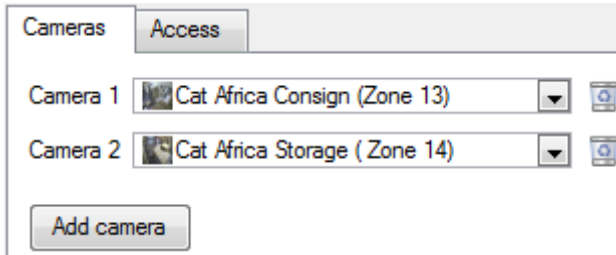
Disable/Enable allows you to manually enable/disable individual nodes.

Prioritise license will allow you to prioritise certain doors, such that they are licensed first, since you may have more doors than licenses.

Delete will permanently remove this object from the list.

Properties will open up the object properties. You may edit the object from here. (Specifically you will be able to assign cameras to this object, as well as define user access levels for it.)

Properties: Cameras



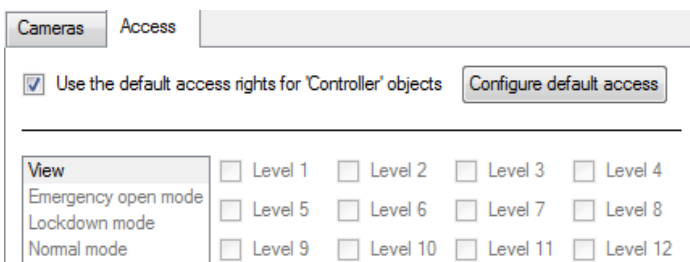
Adding a camera to an object will mean that, whenever there is an event on that object, the recording from that camera will be related to the time and date of the object event, in the Integration database.

To add a camera click on **Add camera**, and select the relevant camera from the drop-down menu.

To delete a camera click on .

Note: If you do not have *continuous recording* setup, on associated cameras, you will run the risk of doors triggering while the cameras are not recording. To only record cameras, when a door triggers, you will need to setup **Events** that trigger a recording, when one of these objects is activated.

Properties: Access



Access allows you to protect sensitive objects, by only allowing certain levels of users access to them.

You will see a list of objects, whose access level you may set.

Note: If you have Use default access rights checked, you must make sure that those default rights have been defined. Click on **Configure default access** to see this.

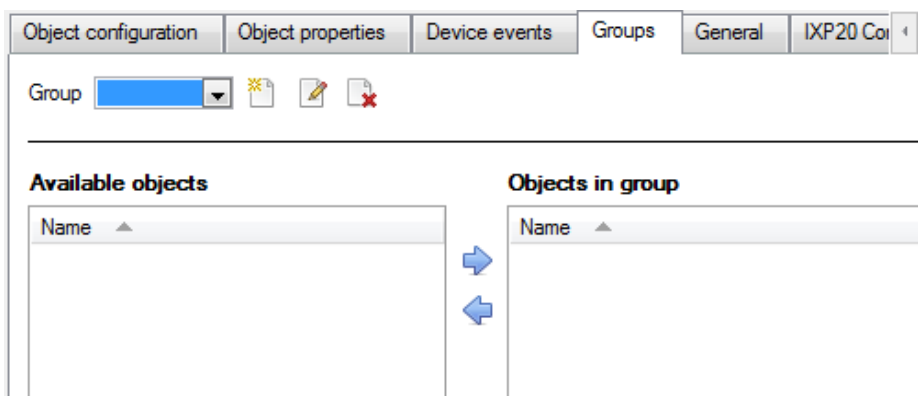
Objects Properties

The Object properties tab allows you to view the objects, sorted by type. In the case of the Saflec device you will have the options of viewing by **Door, Input, Output, and Reader**.

Device Events

This will list real time events happening on this device. It is an excellent way for installers to see that the integration is functioning, and to monitor the live events happening on site.



Groups

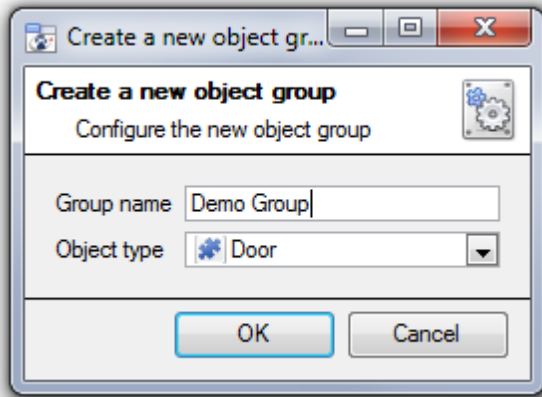


You can create groups of the same type of object.

Tip: This is very useful when setting up Events, because events can be triggered by an object group. (E.G. a group will trigger, if any of the doors in that group is opened.)

- **Create a Group**

To create/edit a group click on  / . (**Note:** Once a group has been created, you may not edit the object type of the group.)

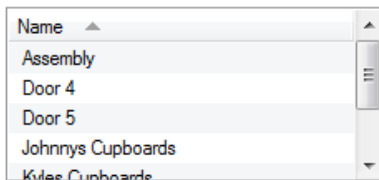


When creating a group you will select what object type you want to include in the group, once the group is created the available objects panel will fill up with all available objects of that type. From this list you will choose which objects you want to use in your Group.

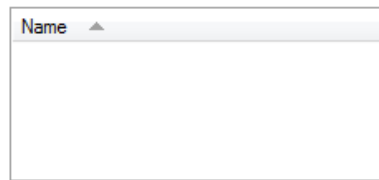
Give the group a descriptive **Group name**.

Click on the drop-down menu to select the **object type** that you would like to group.



Available objects



Objects in 'Demo Group' group





You will then see a list of Available Objects.

To add/remove these objects to the group select them (you may select multiple at a time), and click on  / .

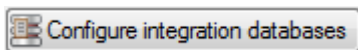
General

The general tab deals with the integration database. Here you will be able to select a pre-created database, or you will be able to configure a new database.

- **Select an Integration Database**

Integration database  To select a database click on , and select the relevant database.

- **Configure a New Database**

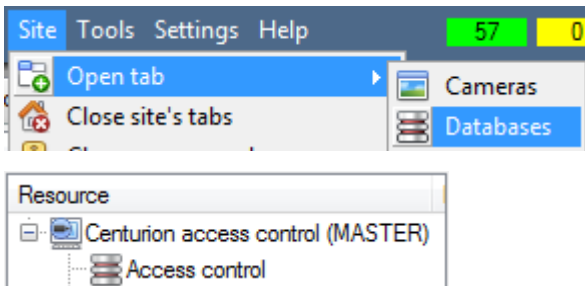


If there is no database created yet, clicking on this button will take you to the integration database setup.

Note: The information on setting up an integration database may be found in the **Integration Devices General Settings** section of the CatVision Setup Manual.

3 Database

a. Navigate to the Database



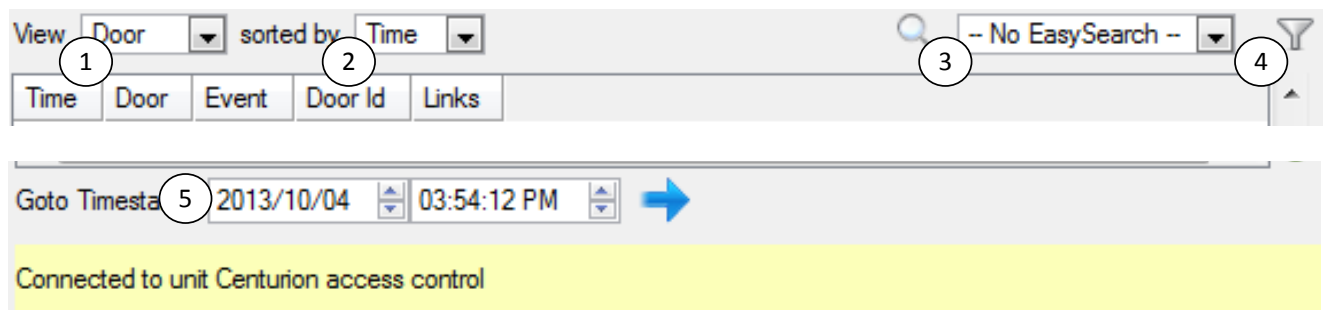
You may view the information stored in the Integration database, by following the path you see to the left.






This will take you to the Database Tab.


Once in the databases tab you will have to select the relevant integration database.

The databases are ordered under the NVRs that they are attached to.

b. Database Interface



<p>① View</p>	<p>You may change the way that your database is presented. Some integration databases have multiple view options. The Saflec database has two options: Door or Access.</p>
<p>② Sorted By</p>	<p>You may sort the Access Events based on the following parameters: Time, Door, or Event.</p>
<p>③ Easy Search</p>	<p>The easy search option allows you to quickly search the database within one of the following options: Door, Event, and Type.</p>
<p>④ Filter </p>	<p>Filter offers a more advanced manner of sorting information in the Integration Database table.</p> <p>You are able to filter based on the following parameters: Time, Door, Event, and Tag.</p> <p>Once you have the filters dialogue open you will have the following options:</p> <ol style="list-style-type: none"> To enable filters check this box: <input checked="" type="checkbox"/> Enable filters To add a new filter click on . <p>The filter icon  will change to  when filters are active.</p> <ol style="list-style-type: none"> To delete an added filter click on . <p>Note:</p> <ol style="list-style-type: none"> You may run multiple filters simultaneously. And you may even filter using the

	<p>same parameter more than once.</p> <p>2. To change a filter click on the blue hyperlinked text. (For example, click on Timestamp to change the filter from Timestamp, to any of the other available options.)</p>
<p>⑤ Go to timestamp</p>	<p>This will allow you to go to a specific point in time, down to the second. To navigate to a timestamp set the time using the time and date boxes, and the click on the  icon.</p>

Viewing an Entry's Associated Recording



If you have attached cameras to device objects in the Integration setup, and have set these cameras up to record continuously, each Integration database entry will have a corresponding recording. To view a data-based event's recording double click it. A floating replay window will appear, from which you may re-view and archive video content.



will give you the view to the left.



will break down the image into 4 sequential frame viewers.

4 Events

a. Introduction

This manual will detail the Saflec specific aspects of Events. There is a comprehensive guide to CatVision Events in the main setup manual and a section on general Integration setup.

Most of the data that CatVision receives from a device is presented in the Events interface. This is done in order to give the user a full range of options. As a result some of the options presented in the interface may be *impractical* for being used to trigger an event, or be used as an action.

Events

To create an event using the Saflec access control, enter the Events management area:



1. Once in Events management click on . This will open up the New Event window.
2. Once in this window, select the Triggers tab and click on the hyper link titled, [standard triggers](#).
 - a. From the menu that drops down, left-click the Saflec device that you want to trigger the event with.

• ***While/When and Any/All***

When triggering on a door you will have the option to trigger **while/when** a trigger is active. You will also be able to select multiple triggers, and define whether **all/any** of the triggers need to be active to set-off an event.

Trigger using [Door 3](#)

[Perform actions while](#) [any](#) of the properties meet the following criteria

As usual, to change these settings click on the related, blue, hyperlinks.

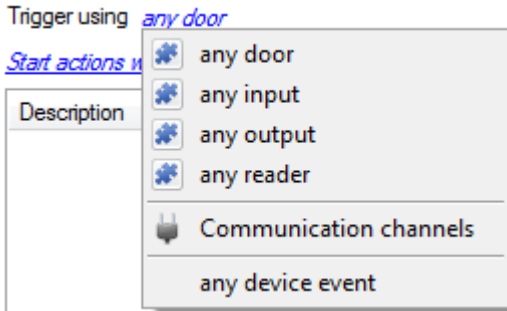
b. Triggers

A trigger is the input that tells the event to start. The trigger causes the subsequent action (which the user will define after the trigger).

Set Your Device as the Trigger

To define which device you want to trigger the event, click on the hyperlink after “use”. If you are creating a new event the trigger type will default to: Use [standard triggers](#). To set it as the Saflec device, click on the hyperlink, and select the relevant device name from the dropdown menu.

• **Trigger types**



Any device event will allow you to use any of the events relating to the main device as a trigger.

Any door/input/output/reader will trigger an event if any of the selected objects meets the criteria set.

Doors in group... if you have created an object group, it will appear in this drop-down list, and may be selected as a trigger.

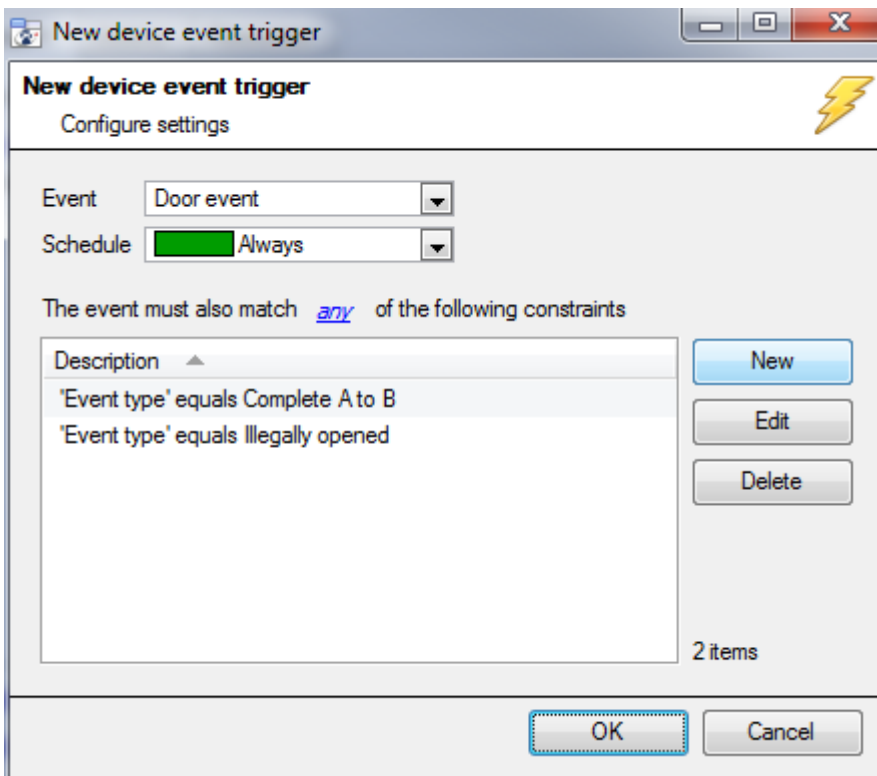
Specific Controller/Door will trigger an event if a specified controller/door meets the criteria set.

Communications Channels will trigger an event based on communication channel messages.

Note: If you want your event to be databased under the name of a specific object, and not the name of the triggering group, you will need to modify the Description field in the **General tab of the Event setup**. Click on the to see a list of available descriptions. Here is an example which will database the text "Door Name" along with the name of the *door object* that triggered the event: Description

Any Device Event

After selecting a master trigger type, you will need to add a trigger to the event. Click on in the Triggers tab. This will bring up the dialogue box you see below:




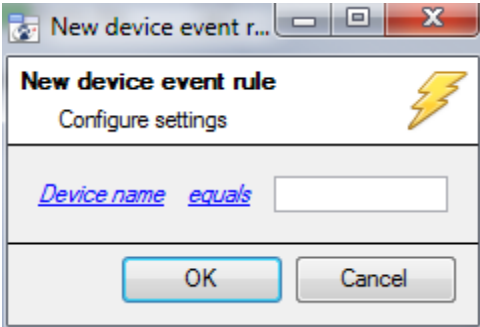
Within the *any device event* option you may choose what type of device **Event** will be your trigger. Choose from the drop-down menu.

To add/edit/delete a rule use the New, Edit, and Delete buttons on the right hand side.

Note: You may set multiple constraints, choosing if *any*, or *all* constraints need to be fulfilled to set off a trigger. Here there are two Events, either of which will trigger the event.

- **Any Device Event**

If you set no constraints, every device event will trigger this. Once you set constraints only the constraints chosen will trigger. Once you have selected the type of device event that will be the trigger, you may add a new **device event rule**. To do this, click on .



To change the constraint click on the hyperlink (in this case [Device name](#)), this will bring up the full list of available rules.

To modify the way this rule will be treated click on the second hyperlink ([equals](#) in the example) this will show you the rules options.

When all available options are known to CatVision you will see a drop-down menu. When these variables are not pre-defined you will need to fill them in yourself. The information pulled through to the events is information sent to CatVision from the Saflec device, see the Saflec settings for the strings needed here.



c. Actions

Once you have defined the triggers, which are going to initiate your event, you will need to define some Actions. One of these actions will be to *control* a Saflec device.

- **Open Actions Tab and Select the Saflec Device**



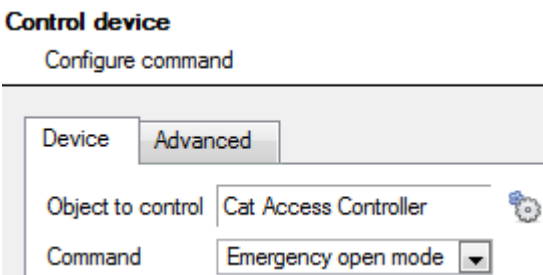
To get started left-click on the tab titled "Actions", and click on .

A menu will drop down containing all the available action types. The device action type is represented by this icon: . It will say "Control ..." and the name of your Saflec device. E.g.  Control Saflec...

Control Device

This will bring up the **control device** dialogue. Under the **device** tab the user defines how the device will be controlled; under the **advanced** tab, the scheduling of the action is defined.

- **Device**



To select an **Object** click on the  icon. This will give you a selection of all the Objects available on the Saflec device.

The **command** drop down will change to represent the commands available to that Object.

Note: you may only take a global action here, and global actions may only apply to **controllers**. As a result you may not control **communication channels**, or **door nodes**, as part of an event action. If you select one of these objects you will have no options in the *Command* menu.



- **Advanced**

Device **Advanced**

Perform action at the ▼

Repeat action every ▼

Don't run action again until ▼ have passed

Schedule ▼  

You may choose to **perform action at the** start of the event, or once the event triggers have subsided.

The two checkboxes allow the user to set the action to repeat every few seconds, and/or not run for a period after it has triggered.

Schedule is a standard Cathexis schedule, which you may apply to the actions.